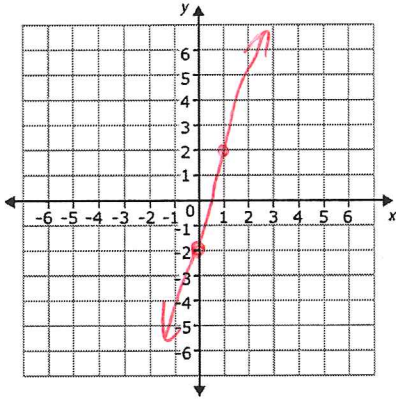
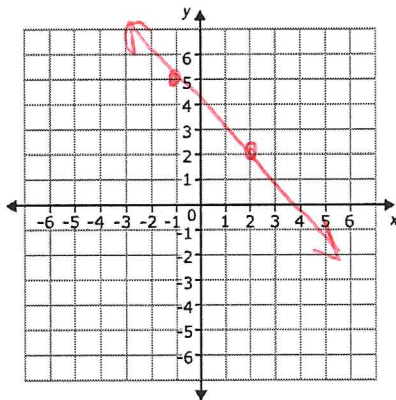


Practice Point-Slope 2

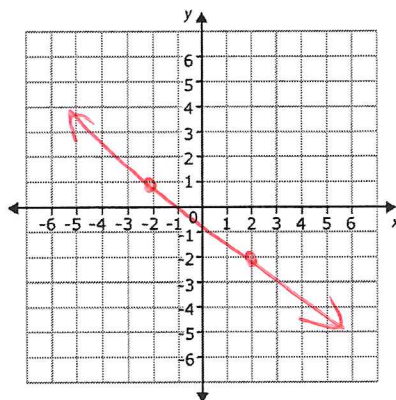
1. Write the equation of the line in point-slope form. Start by finding a point and the slope of the line.



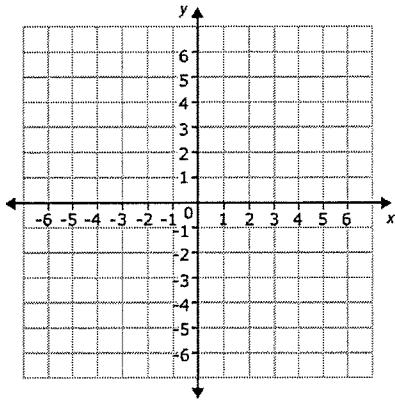
2. Write the equation of the line in point-slope form. Start by finding a point and the slope of the line.



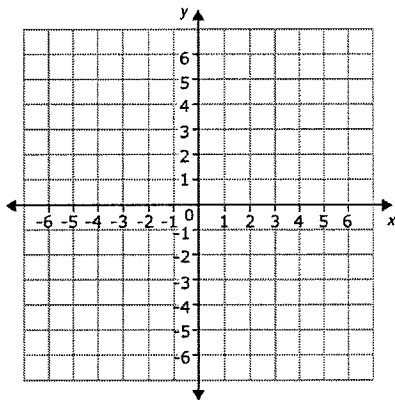
3. Write the equation of the line in point-slope form. Start by finding a point and the slope of the line.



4. Suppose we have points $(3,4)$ and $(-1,2)$. What is the equation of the line in point slope form?



5. Suppose we have points $(0,0)$ and $(2,-1)$. What is the equation of the line in point slope form?



6. Suppose we have points $(4,5)$ and $(6,-1)$. What is the equation of the line in point slope form?

