

Point-Slope and Slope-Intercept Review 1

Point-slope form is: $y - y_1 = m(x - x_1)$

Slope-intercept form is: $y = mx + b$

Which form are the following equations in?

1. $y - 2 = 10(x - 3)$

2. $y - 1 = -2(x - 5)$

3. $y = 2x + 1$

4. $y - 0 = 1(x - 2)$

5. $y = 4x + 1$

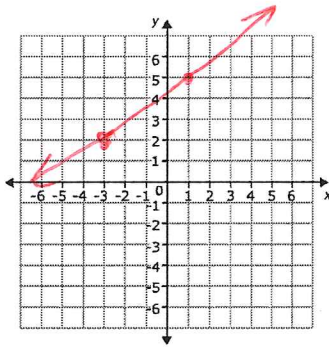
6. $y = -3x + 2$

Write the equation for the line in point-slope form and in slope-intercept:

7.

Point-slope form:

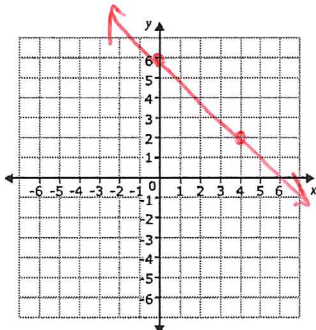
Slope-intercept form:



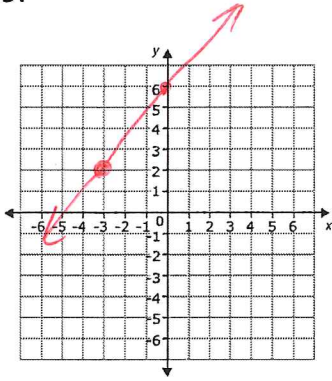
8.

Point-slope form:

Slope-intercept form:



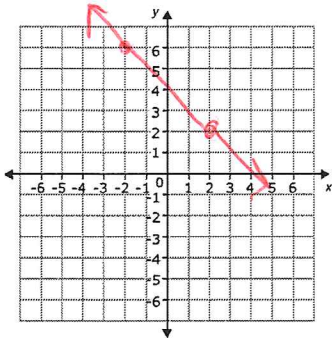
9.



Point-slope form:

Slope-intercept form:

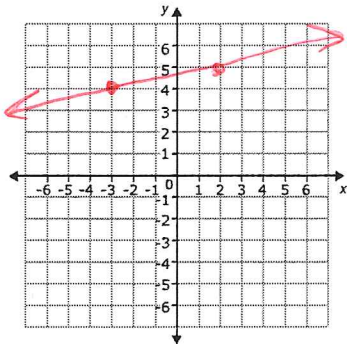
10.



Point-slope form:

Slope-intercept form:

11.



Point-slope form:

Slope-intercept form: